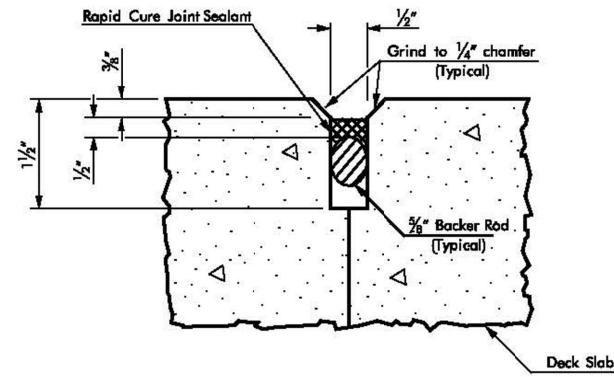


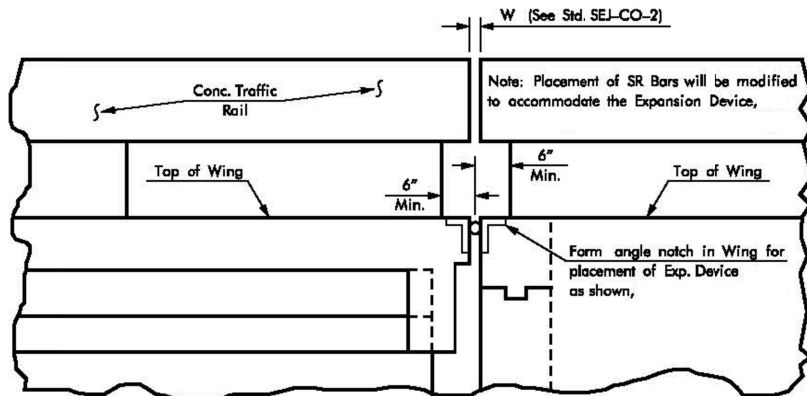
**DETAIL "B"**

NOTE † 1/4" Exp. Material included in 1'-0".

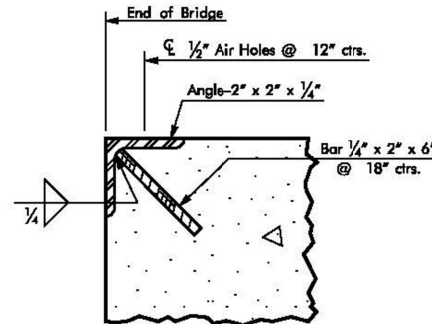
‡‡ The 2" x 2" x 1/4" Steel Angle Bumper Shall extend across the entire Roadway width of the Bridge. Material included in Structural Steel Quantities. (See Steel Angle Bumper Detail).



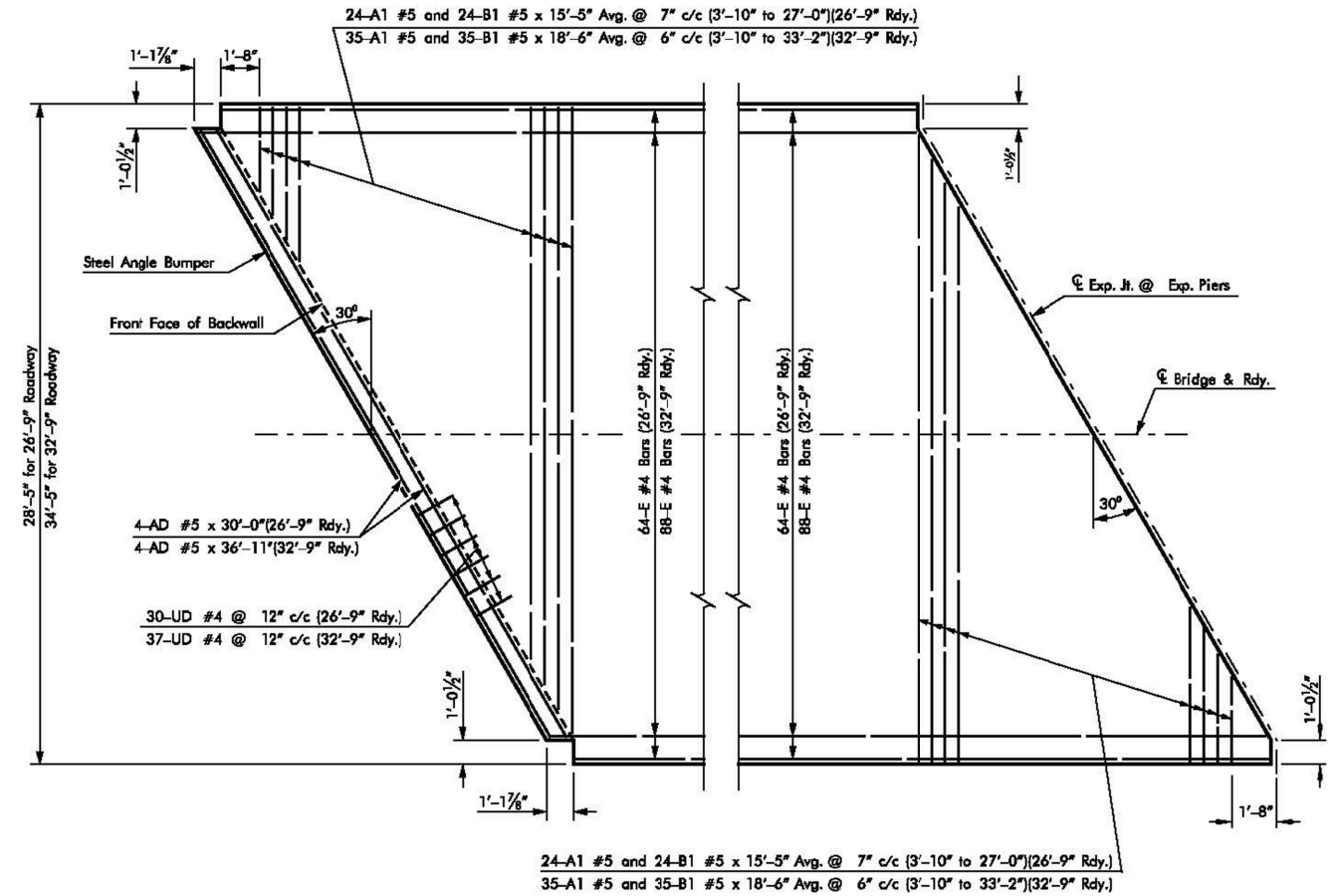
**DETAIL "C"**



**SUPERSTRUCTURE DETAIL OF EXPANSION JOINT AT ABUTMENT**



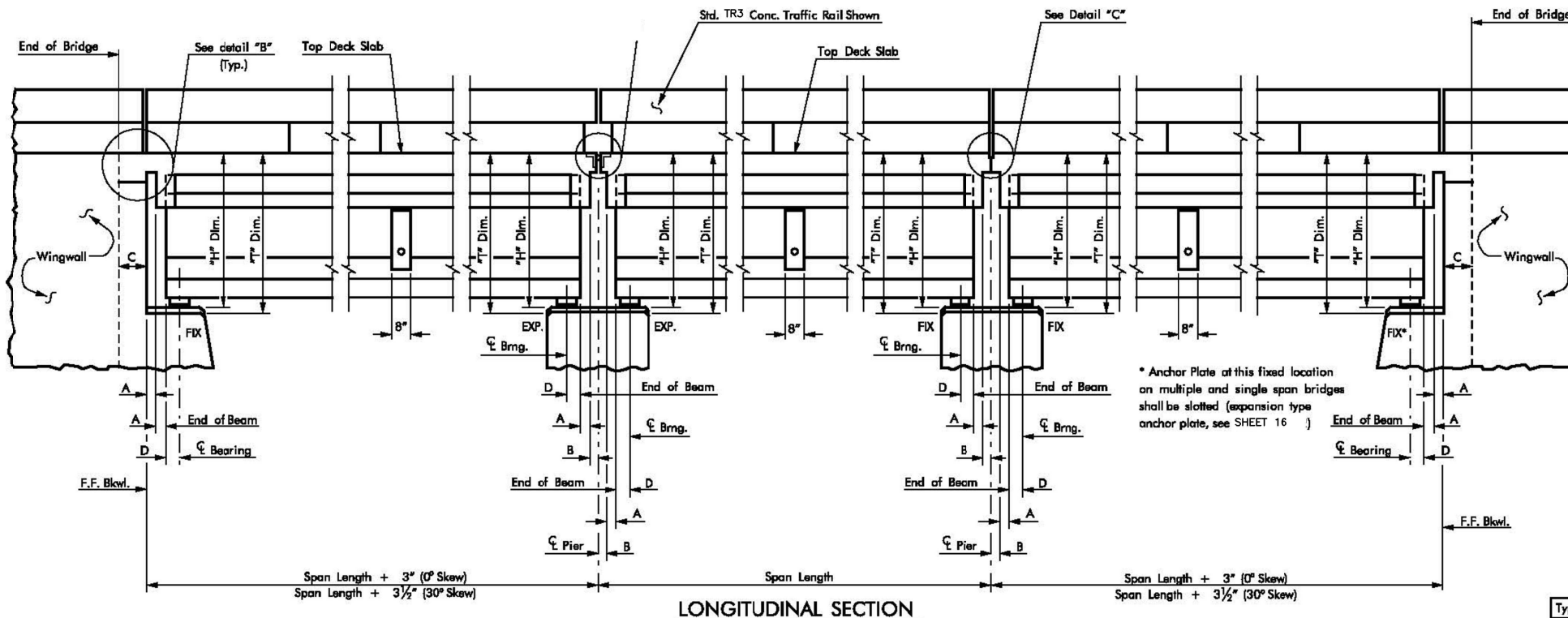
**STEEL ANGLE BUMPER DETAIL**



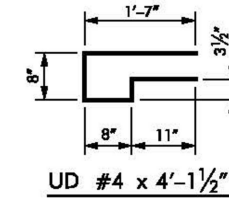
NOTES: 2 "E" Bars under each traffic rail on spans with fixed abutments shall be 1'-2" shorter than other "E" Bars.  
Provide 1'-6" Lap for all reinforcing over 60'-0" in length. All splices shall be staggered.  
30° Right Forward Skew shown. 30° Left Forward Skew by opposite hand.

**TYPICAL SLAB REINFORCING AT FIXED ABUTMENTS (30° SKEW)**

**TYPICAL SLAB REINFORCING AT PIERS AND EXPANSION ABUTMENTS (30° SKEW)**



**LONGITUDINAL SECTION**



DIM.	0° SKEW	30° SKEW
A	4"	4 3/8"
B	1"	1 1/8"
C	1'-0"	1'-1 1/8"
Type II & III P.C. Beams	D	5 1/2"
Type IV P.C. Beams	D	5 3/4"

SPAN LENGTH	26'-3" ROADWAY		32'-9" ROADWAY	
	"H" DIM. ①	"T" DIM. ②	"H" DIM. ①	"T" DIM. ②
35'	4.1042'	4.4427'	4.1041'	4.4896'
40'	4.1042'	4.4427'	4.1041'	4.4896'
45'	4.1042'	4.4427'	4.1041'	4.4896'
50'	4.1042'	4.4427'	4.1041'	4.4896'
55'	4.8542'	5.1927'	4.8541'	5.2396'
60'	4.8542'	5.1927'	4.8541'	5.2396'
65'	4.8542'	5.1927'	4.8541'	5.2396'
70'	4.8542'	5.1927'	4.8541'	5.2396'
75'	4.8542'	5.1927'	4.8541'	5.2396'
80'	5.6042'	5.9427'	5.6041'	5.9896'
85'	5.6042'	5.9427'	5.6041'	5.9896'
90'	5.6042'	5.9427'	5.6041'	5.9896'
95'	5.6042'	5.9427'	5.6041'	5.9896'
100'	5.6042'	5.9427'	5.6041'	5.9896'
105'	5.6042'	5.9427'	5.6041'	5.9896'

① Dimension measured from Top of Slab to Bottom of Bearing Assembly.  
② Dimension measured from Finish Grade Line to Top of Pier or Bridge Seat.